

Jewelry Armoire Over the Door/Wall Mirror

This mirror can hang on the wall (with screws) **OR** over the door (with enclosed hanging hooks)

Upon opening the carton, please check that you have all parts and that they are in good order. Mirrotek has always strived to make a quality product that you will be proud to own. If anything is damaged or missing, please call us. We will be happy to ship you replacement parts at no charge. In order that we may serve you better, please have the instruction sheet on hand when you call.

Customer Service: (888) 659-3030.

AN IMPORTANT NOTE FOR WALL HANGING

BE SURE TO USE TOGGLE NUTS ENCLOSED if you have hollow walls. THE HANGER MUST BE **SECURELY** ATTACHED TO THE WALL.



Screws and Mollys
(for Standard walls)

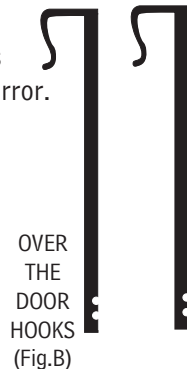
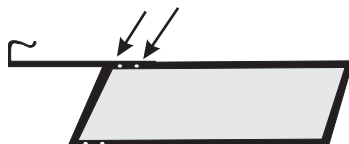
INSTRUCTIONS TO HANG THE MIRROR OVER THE DOOR:

Step 1: Place the armoire with the mirror side down on a secure flat surface.

Step 2: Locate the 2 screws already screwed into the back of the item and unscrew (keep the screws nearby).

Step 3: Take one hanger and using the screws you just removed, attach the hanger to the mirror.

Step 4: To attach the second hanger repeat steps 1, 2, and 3.



Step 5: Hang on door by placing hangers (screwed into mirror back) over the door (Fig.C).

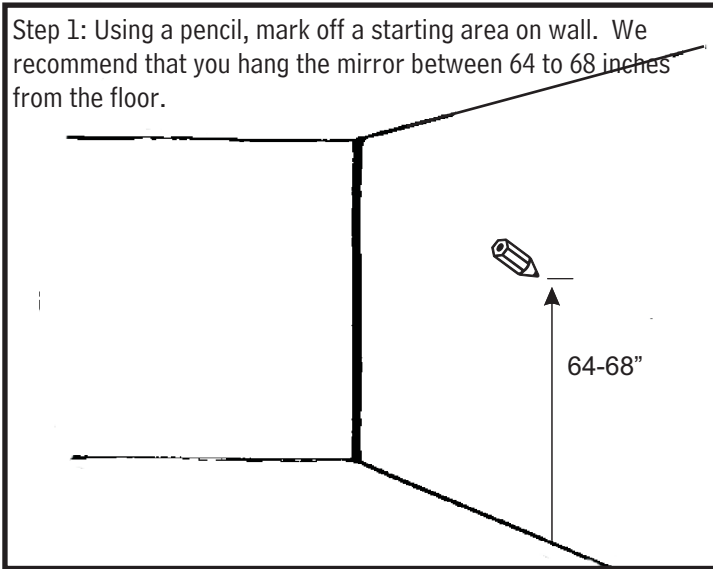


Hang over the door once hangers are attached to Armoire Mirror. (Fig.C)

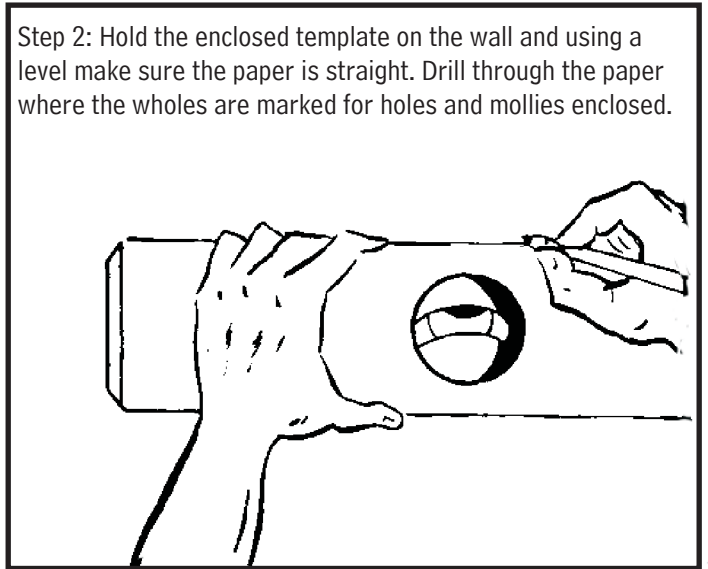


ATTACHING MIRROR TO THE WALL

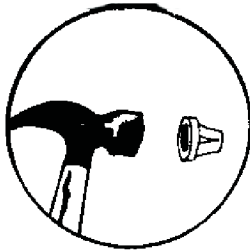
Step 1: Using a pencil, mark off a starting area on wall. We recommend that you hang the mirror between 64 to 68 inches from the floor.



Step 2: Hold the enclosed template on the wall and using a level make sure the paper is straight. Drill through the paper where the holes are marked for holes and mollies enclosed.



Step 3: Be sure screws protrude 1/4 inch from the wall.

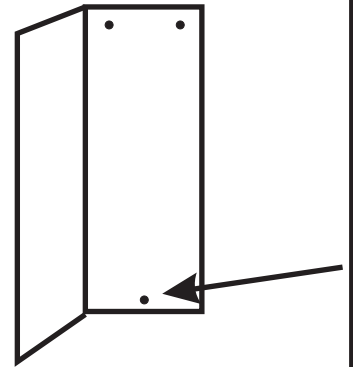


IMPORTANT:

Be sure to use the right hardware for your type of wall. Mollies and special anchors are sometimes necessary for certain walls.

Step 4:

Hang unit on screws and screw in 3rd screw, on the bottom, to secure item to the wall.



You are now ready to organize your collection in your Jewelry Armoire Mirror.

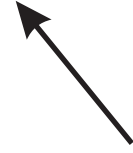
MADE IN THE USA

Keeping Jobs in America since 1942

PLACE TEMPLATE AGAINST THE PENCIL MARK ON THE WALL AND TEMPORARILY TAPE PAPER TO WALL.



Drill holes through these circles to hang your mirror on the wall.



TEMPLATE TO ATTACH JEWELRY ARMOIRE TO THE WALL

If you have any questions call us:

1-888-659-3030